

# LAKEVIEW ELEMENTARY SCHOOL DESIGN CENTER

455 Rural Hill Road | Nashville, TN 37217 | 615-360-2912



**567**  
**STUDENTS**

Asian .03%  
African American 30%  
Hispanic 40%  
White 30%



**71**  
**FACULTY & STAFF**



**4**  
**COMMUNITY PARTNERS**

## SERVES GRADES PRE-K-4 IN THE ANTIOCH CLUSTER

- ☑ Open Enrollment
- ☑ Offers Bus Transportation
- ☑ Offers Before or After Care

### ADMINISTRATION

Executive Principal: Dr. Shantrell Pirtle,  
Shantrell.pirtle@mnps.org

Assistant Principal: Dr. Jeffery Gilmore,  
Jeffery.gilmore@mnps.org

School Board Representative: Fran Bush

 [schools.mnps.org/lakeview-elementary-design-center](https://schools.mnps.org/lakeview-elementary-design-center)

 @LDCLions

 [facebook.com/LakeviewElementaryDesignCenter](https://facebook.com/LakeviewElementaryDesignCenter)

### SCHOOL HIGHLIGHTS

- ★ Character Education Focus
- ★ Blended Learning
- ★ Disney Theater Productions
- ★ Diverse Population of Students
- ★ Faculty and staff that are student centered with a focus on the whole child.

### DRESS CODE

**Tops:** Any solid color with collar.

**Bottoms:** Navy, black or khaki pants, shorts, skirts or jumpers

### ACADEMIC PROGRAMS

Design center

### FEATURED EXTRACURRICULAR ACTIVITIES

Debate/speech club, drama club, english language reading club

### FEATURED COMMUNITY PARTNERS

Kroger , U S Community Credit Union, Smith Springs Baptist Church, UPS

### RESOURCES & SUPPORTS

Clothing Closet, tutoring, Restorative Justice, mentoring Food Bank, PBIS



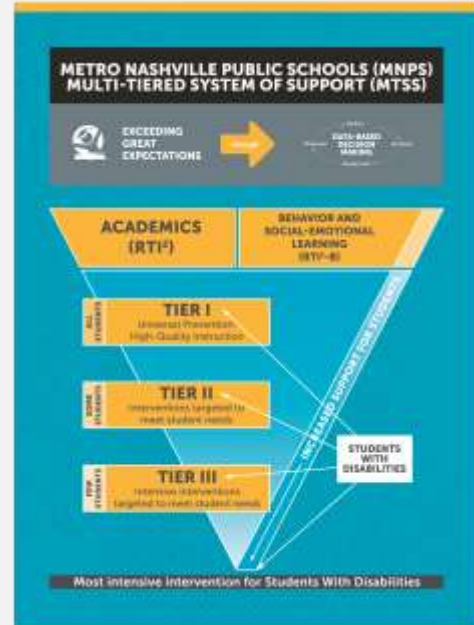
The Metropolitan Nashville Public Schools (MNPS) does not discriminate on the basis of race, religion, creed, sex, gender, gender identity, sexual orientation, national origin, color, age, and/or disability in admission to, access to, or operation of its programs, services, or activities. MNPS does not discriminate in its hiring or employment practices.

## MULTI-TIERED SYSTEM OF SUPPORT (MTSS)

Metro Schools knows our students each have a unique set of needs and the teaching and learning in our classrooms must reflect that. Through our Multi-Tiered System of Support (MTSS) framework, educators and administrators have proven tools at their disposal to support a timely and effective response to academic and behavioral needs for each student — meeting the child where they are.

## HOW MTSS WORKS

Our school has a dedicated MTSS team, representative of teachers and leaders throughout the building. This team meets to discuss students who may need additional supports and reviews each student’s supporting data. Our MTSS data team meets every five weeks to identify students who may need additional supports and interventions. This team monitors students’ progress and adjusts plans as needed.



## MTSS IN ACTION AT LAKEVIEW ELEMENTARY SCHOOL DESIGN CENTER

Universal Supports for All Students	Targeted Supports and Interventions	Intensive Supports and Interventions
<ul style="list-style-type: none"> <li>• Clear expectations for daily attendance</li> <li>• School-wide positive behavior expectations</li> <li>• Equitable access to rigorous grade-level, standards-based instruction that is culturally responsive and integrates social/emotional development</li> <li>• Inclusive partnerships with families and communities</li> <li>• Consistent school-wide discipline procedures</li> <li>• Physical activity and nutrition services</li> </ul>	<ul style="list-style-type: none"> <li>• SSiS SEL</li> <li>• Check in/out (The Behavior Education Program)</li> <li>• On-going Solution Focused Counseling</li> <li>• Small Group Behavioral Skills Instruction</li> <li>• Leveled Literacy Intervention</li> <li>• S.P.I.R.E.</li> <li>• Waterford</li> <li>• Do the Math</li> </ul>	<ul style="list-style-type: none"> <li>• Behavior Intervention Plan</li> <li>• On-going solution focused counseling</li> <li>• Small group behavioral skills instruction</li> <li>• S.P.I.R.E.</li> <li>• Waterford</li> </ul>